



NEW!

ENGINE

| | |
|-----------------|---|
| Model | : ISUZU-AI-4HK1X |
| Type | : Water-cooled, 4 cycle, 4 cylinders, line type direct injection, turbocharger, intercooler, electronic diesel engine |
| Power | : 172 HP (128 kW) @2000 rpm / SAE J1995 (Gross) : 162 HP (121 kW) @2000 rpm / SAE J1349 (Net) |
| Max. Torque | : 677 Nm @1500 rpm (Gross) : 656 Nm @1500 rpm (Net) |
| Displacement | : 5193 cc |
| Bore and Stroke | : 115 mm x 125 mm |

* This engine complies with the Emission Regulations U.S. EPA Tier 3, and EU Stage III-A

UNDERCARRIAGE

| | |
|---|-------------------------------|
| X Type Lower Frame Construction Pentagon Box Type Chassis | |
| Shoe | : Triple grouser |
| No. Of Shoes | : 2 x 49 |
| No. Of Lower Rollers | : 2 x 9 |
| No. Of Upper Rollers | : 2 x 2 |
| Track Tensioning | : Hydraulic Spring Tensioning |

CAB

- Wide cab and easy entrance
- Use of six viscomount cabin mountings that dampen the vibrations
- Cooled storage room
- Colourful, Easy to read TFT indicant monitor
- Glass holder, book and object storage pockets
- Full automatic digitally air-conditioner
- Overclass standarts on the visibility
- Pool type flor mat
- Improved operator's comfort through versatile adjustable seat
- Ergonomically redesigned cabin through relocated switch board, and re-styled travel pedals and levers
- USB connected MP3 player
- Easy to open the front sliding glass
- Front and rear sun visor
- Large storage areas
- Height adjustable joystick
- Improved seat to back angle
- The height adjustable seat armrests
- Opera Control System

TRAVEL AND BRAKERS

| | |
|------------------------------|-----------------------------|
| Travel | : Fully hydrostatic |
| Travel Motors | : Axial piston type |
| Reduction | : 2 stage planetary gear |
| Travel Speed | |
| High Speed | : 5,8 km/h |
| Low Speed | : 3,8 km/h |
| Max. Drawbar Pull | : 18.365 kqf |
| Gradeability | : 35° (%70) |
| Parking Brake | : Hydraulic multi disc type |
| Ground Pressure (600mm Shoe) | : 0,50 kgf/cm ² |

LUBRICATION

Centralized lubrication system is provided for lubrication all difficult-to-reach parts on the components, such as boom and arm

HYDRAULIC SYSTEM

| | |
|-----------------|---|
| Main Pump | |
| Type | : Double variable displacement axial piston pumps |
| Max. Flow | : 2 x 231 L/min |
| Pilot Pump | : Gear, 20 L/min |
| Relief Valves | |
| Attachment | : 350 kgf/cm ² |
| Power Boost | : 370 kgf/cm ² |
| Travel | : 350 kgf/cm ² |
| Swing | : 306 kgf/cm ² |
| Pilot | : 40 kgf/cm ² |
| Cylinders | |
| Main Boom | : 2 x ø 120 x ø 85 x 1.300 mm |
| Stick Cylinder | : 1 x ø 135 x ø 95 x 1.520 mm |
| Bucket Cylinder | : 1 x ø 120 x ø 85 x 1.060 mm |

OPERA CONTROL SYSTEM

- Easy-to-use control panel and menus
- Overheat prevention and protection system without interrupting the work
- Automatical electric power-off
- Maximum efficiency by selection of power and work modes
- Error mode registry and warning system
- Improved fuel economy and productivity
- Automatic idling Selection of multi-language on control panel
- Rear-view, arm-view camera (Optional)
- Possibility to register 27 different operating hours
- Anti-theft system with personal code
- Real time monitoring of operational parameters such as pressure, temperature, engine load

SWING SYSTEM

| | |
|--------------|---|
| Swing Motor | : Axial piston type integrated with shock absorber valves |
| Reduction | : 2 stage planetary gear box. |
| Swing Brakes | : Hydraulic multi disc type, automatic warnings |
| Swing Speed | : 12,60 rpm |

CAPACITY

| | | | |
|------------------|---------|------------|--------|
| Fuel Tank | : 405 L | Engine Oil | : 21 L |
| Hydraulic Tank | : 152 L | Radiator | : 33 L |
| Hydraulic System | : 285 L | | |

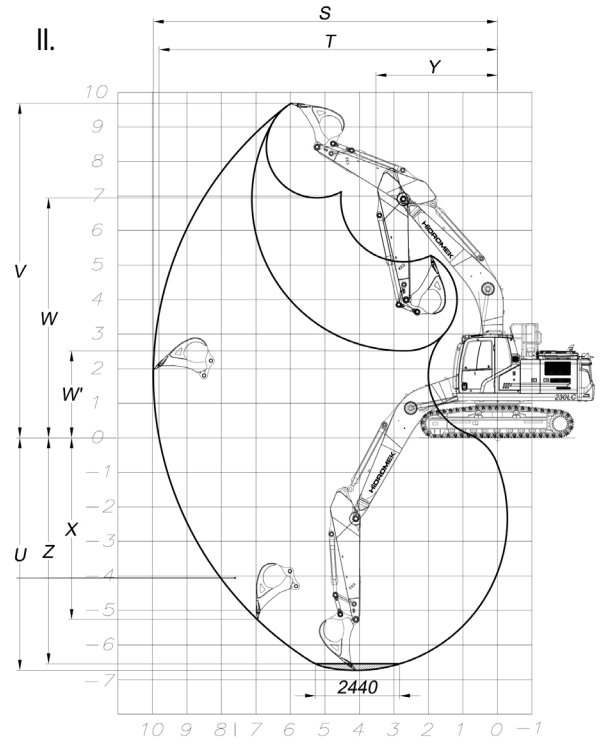
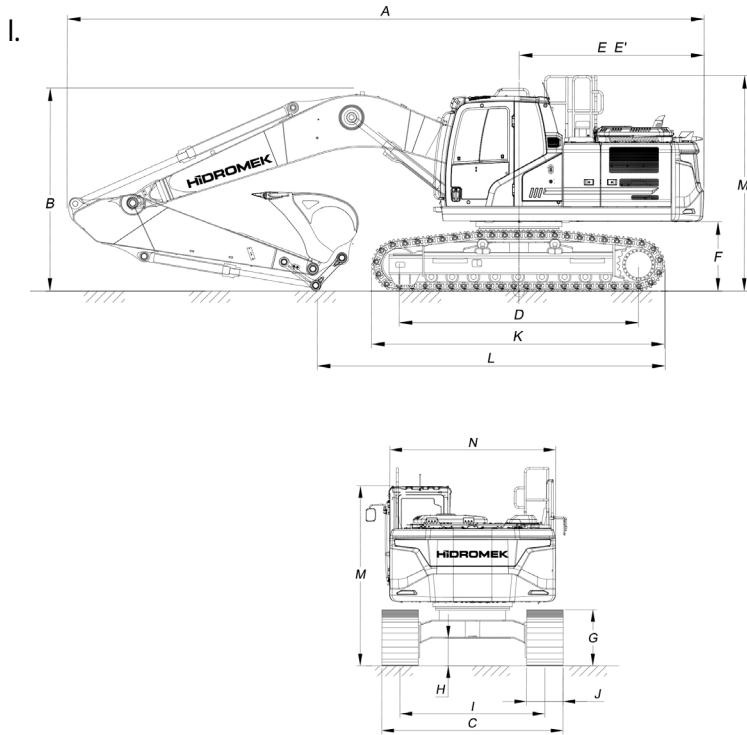
ELECTRICAL SYSTEM

| | |
|----------------|---------------------|
| Voltage | : 24V |
| Battery | : 2 x 12 V x 100 Ah |
| Alternator | : 24V / 50 A |
| Starting Motor | : 24V / 5 kW |

OPERATING WEIGHT

Standard machine operating weight : 23.400 kg

Operational weight, complying with the ISO 6016 standards, includes full fuel tank, hydraulic system and other liquids, 75kg operator weight and standard equipped machine weight. Optional equipments are not included.



I. GENERAL DIMENSIONS

| Boom Dimension | 5.70 mm | |
|---------------------------------------|----------|----------|
| Arm Dimension | *2.92 mm | 2.40 mm |
| A - Overall Length | 9.680 mm | 9.680mm |
| B - Boom (Shipping) Height | 3.120 mm | 3.110 mm |
| C - Lower Frame Width | 2.990 mm | |
| D - Track Base Length | 3.640 mm | |
| E - Counterweight Distance | 2.810 mm | |
| E' - Countweight Turning Radius | 2.830 mm | |
| F - Upper Chassis to Ground Clearance | 1.065 mm | |
| G - Crawler Height | 935 mm | |
| H - Ground Clearance | 465 mm | |
| I - Track Gauge | 2.390 mm | |
| J - Shoe Width | 600 mm | |
| K - Lower Chassis Length (from shoe) | 4.460 mm | |
| L - Shipping Length | 5.320 mm | 5.920 mm |
| M - Cab Height | 3.010 mm | |
| N - Upper Frame Width | 2.740 mm | |

* Standard

II. WORKING DIMENSIONS

| Boom Dimension | 5.70 mm | |
|---|----------|----------|
| Arm Dimension | *2.92 mm | 2.40 mm |
| S - Maximum Reach Distance | 9.970 mm | 9.560 mm |
| T - Maximum Reach at Ground Level | 9.810 mm | 9.390 mm |
| U - Maximum Digging Depth | 6.730 mm | 6.210 mm |
| V - Maximum Digging Height | 9.680 mm | 9.620 mm |
| W - Maximum Unloading Height | 6.950 mm | 6.840 mm |
| W' - Maximum Unloading Height | 2.520 mm | 3.040 mm |
| X - Minimum Vertical Wall Digging Depth | 5.250 mm | 5.050 mm |
| Y - Minimum Swing Radius | 3.520 mm | 3.550 mm |
| Z - Maximum Digging Depth (2440 mm level) | 6.540 mm | 6.010 mm |

* Standard

III. DIGGING PERFORMANCE

| | |
|--|---------------------|
| Standard Bucket Capacity (SAE) | 1,10 m ³ |
| Bucket Digging Force (Power Boost) ISO | 14.900 (15.800) kgf |
| Arm Crowd Force (Power Boost) ISO | 10.400 (10.900) kgf |

